

PURPOSE

The Radial Cement Bond Tool provides an accurate evaluation of the cement bond quality and integrity to both pipe and formation by providing a 360° C cement map with a dedicated 8 Sector Radial receiver, with each sector spaced 45° C circumferentially around the tool located (2ft) from the transmitter.

The segmented receiver provides a good indication of cement channeling behind the casing while the tool also provides standard cement bond amplitude (CBL) through Near receiver (3ft), and Variable Density Log (VDL) through Far receiver (5ft).



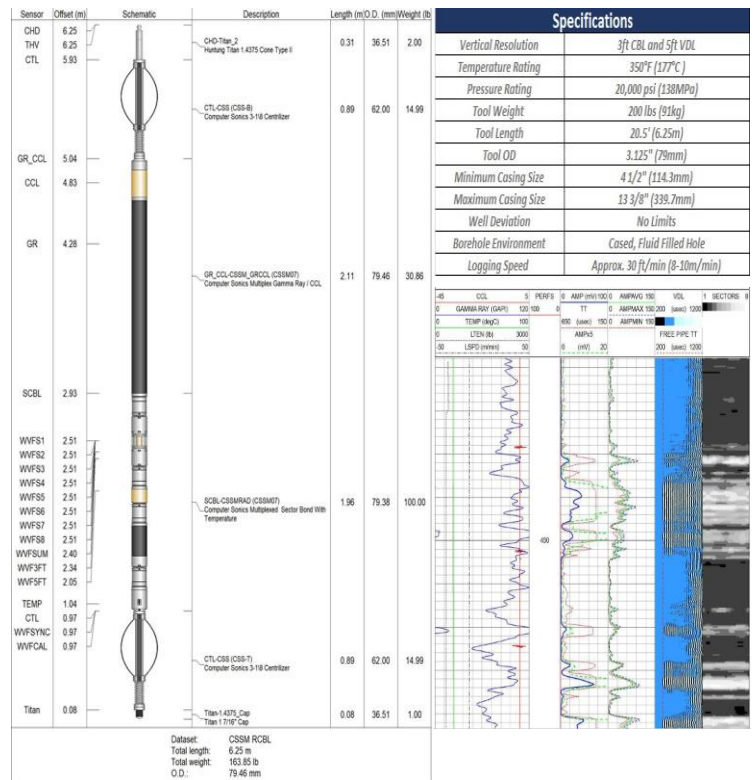
APPLICATIONS

- ✓ Identify cement top.
- ✓ Confirm isolation between zones.
- ✓ Identify Fast formation / Channeling / Micro-annulus.
- ✓ Cement bond quality & integrity to both pipe and formation.



Advantages

- Ran in conjunction with a Gamma Ray (GR) and a Casing Collar Locator (CCL) placed on top of the radial cement bond tool string (SEE DIAGRAM ON PAGE 2)
- Located on the bottom of the tool string is an integrated temperature probe to provide an accurate measurement of wellbore temperature.
- Compatible with Compensated Neutron Tool (CNT) that can be ran below the bond tool receiver section.
- Lower operating time and cost with the ability to run the above tools in one run. GR/CCL/CBL/VDL/TEMP/CNT



www.titaniumenergyservices.com

Titanium Energy Services
 1040, 330, 5th Ave. SW
 Calgary AB T2P 0L4
 1-844-875-1395